

## AGENDA

**Meeting:** CALNE AREA BOARD

**Place:** Hilmarton Community Centre, Poynder Place, Hilmarton, Calne, Wiltshire,  
SN11 8SQ

**Date:** Tuesday 27 April 2010

**Time:** 7.00 pm

---

Including the Parishes of Bremhill, Calne, Calne Without, Cherhill, Compton Bassett, Heddington and Hilmarton.

---

**The Area Board welcomes and invites contributions from members of the public. The Chairman will try to ensure that everyone who wishes to speak will have the opportunity to do so.**

If you have any requirements that would make your attendance at the meeting easier, please contact your Democratic Services Officer.

**Refreshments and networking opportunities will be available from 6.30pm.**

---

Please direct any enquiries on this agenda to Alexa Smith (Democratic Services Officer), on 01249 706612 or email [alexa.smith@wiltshire.gov.uk](mailto:alexa.smith@wiltshire.gov.uk) or Jane Vaughan (Calne Community Area Manager), direct line 01249 706447 or email [jane.vaughan@wiltshire.gov.uk](mailto:jane.vaughan@wiltshire.gov.uk)

All the papers connected with this meeting are available on the Council's website at [www.wiltshire.gov.uk](http://www.wiltshire.gov.uk)

Press enquiries to Communications on direct lines 01225 713114 / 713115.

---

### Wiltshire Councillors

Cllr Chuck Berry, Calne North  
Cllr Christine Crisp, Calne Rural (Vice  
Chairman)  
Cllr Alan Hill, Calne South and Cherhill  
(Chairman)

Cllr Howard Marshall, Calne Central  
Cllr Anthony Trotman, Calne Chilvester  
and Abberd

Items to be considered	Time
<p>1. <b>Chairman's Welcome and Introductions</b> (<i>Pages 1 - 4</i>)</p> <p>The Chairman will welcome Councillor John Brady, Cabinet Representative for Economic Development, Planning and Housing.</p>	7.00pm
<p>2. <b>Apologies for Absence</b></p>	
<p>3. <b>Minutes</b> (<i>Pages 5 - 14</i>)</p> <p>To approve and sign as a correct record the minutes of the meeting held on 16 February 2010.</p>	
<p>4. <b>Declarations of Interest</b></p> <p>Councillors are requested to declare any personal or prejudicial interests or dispensations granted by the Standards Committee.</p>	
<p>5. <b>Consultation on Library Opening Hours</b></p> <p>Wendy Beaver, Community Librarian, will give a short presentation on the library opening hours. There will then be the opportunity to vote on the preferred library opening hours.</p>	7.10pm
<p>6. <b>Skate Boarding in Calne</b></p> <p>Will Kay, Youth Development Co-Ordinator, will provide an update on skate boarding in the Calne Community Area.</p>	7.20pm
<p>7. <b>Partner Updates</b> (<i>Pages 15 - 20</i>)</p> <p>To receive an update from the partners listed below:</p> <ul style="list-style-type: none"> <li>a) Wiltshire Police update and introducing Police Protective Services</li> <li>b) Wiltshire Fire and Rescue Service</li> <li>c) NHS Wiltshire</li> <li>d) Calne Community Area Partnership</li> <li>e) Calne CAYPIG (Community Area Young People's Issues Group)</li> <li>f) Town and Parish Councils.</li> </ul>	
<p>8. <b>Community Area Grants</b> (<i>Pages 21 - 48</i>)</p> <p>To consider four applications to the Community Area Grants Scheme, as below:</p> <ul style="list-style-type: none"> <li>a) Calne Community Day Centre – towards equipment that will stimulate physical activity and social interaction and sport for people aged over 60 through developing opportunities to</li> </ul>	8.00pm

	<ul style="list-style-type: none"> <li>play new age curling</li> <li>b) Calne Community Church – towards a ‘Children’s Village Project’ as a part of the Calne Summer Festival</li> <li>c) Summer Fun in Calne Play Scheme - providing a four week programme of inclusive activities for young people and children during the summer holidays</li> <li>d) Calne Partnership of Churches - towards providing weekly drop in activity sessions for young people delivered through the ‘Open Blue Bus’ in the town centre.</li> </ul>	
9.	<p><b>Performance Reward Grant Scheme</b> (<i>Pages 49 - 50</i>)</p> <p>An expression of interest had been received by all Wiltshire Area Boards for the Community Payback Scheme.</p>	<b>8.05pm</b>
10.	<p><b>Your Local Issues</b></p> <p>Councillors will provide an update on community issues and progress on Area Board working groups. This will include:</p> <ul style="list-style-type: none"> <li>a) The Community Hub</li> <li>b) The Abberd Brook Project</li> <li>c) Participatory Budgeting – ‘Make a Stand for Cycling’</li> <li>d) Community Speed Watch, followed by round table discussion.</li> </ul>	<b>8.10pm</b>
11.	<p><b>Cabinet Representative</b></p> <p>There will be the opportunity to ask Councillor John Brady questions regarding his Cabinet responsibility for Economic Development, Planning and Housing.</p>	<b>8.35pm</b>
12.	<p><b>Results of the Consultation on Library Opening Hours</b></p> <p>The Area Board will make a decision on the library opening hours in Calne.</p>	<b>8.40pm</b>
13.	<p><b>Any Questions</b></p> <p>The Chairman will address any questions and comments from the floor.</p>	<b>8.50pm</b>
14.	<p><b>Close</b></p> <p>The Chairman will set out arrangements for the next meeting.</p>	<b>9.00pm</b>

**Future Meeting Dates**

Tuesday, 29 June 2010

7.00 pm

Calne Town Hall

Tuesday, 24 August 2010

7.00pm

Calne Town Hall

Tuesday, 26 October

7.00pm

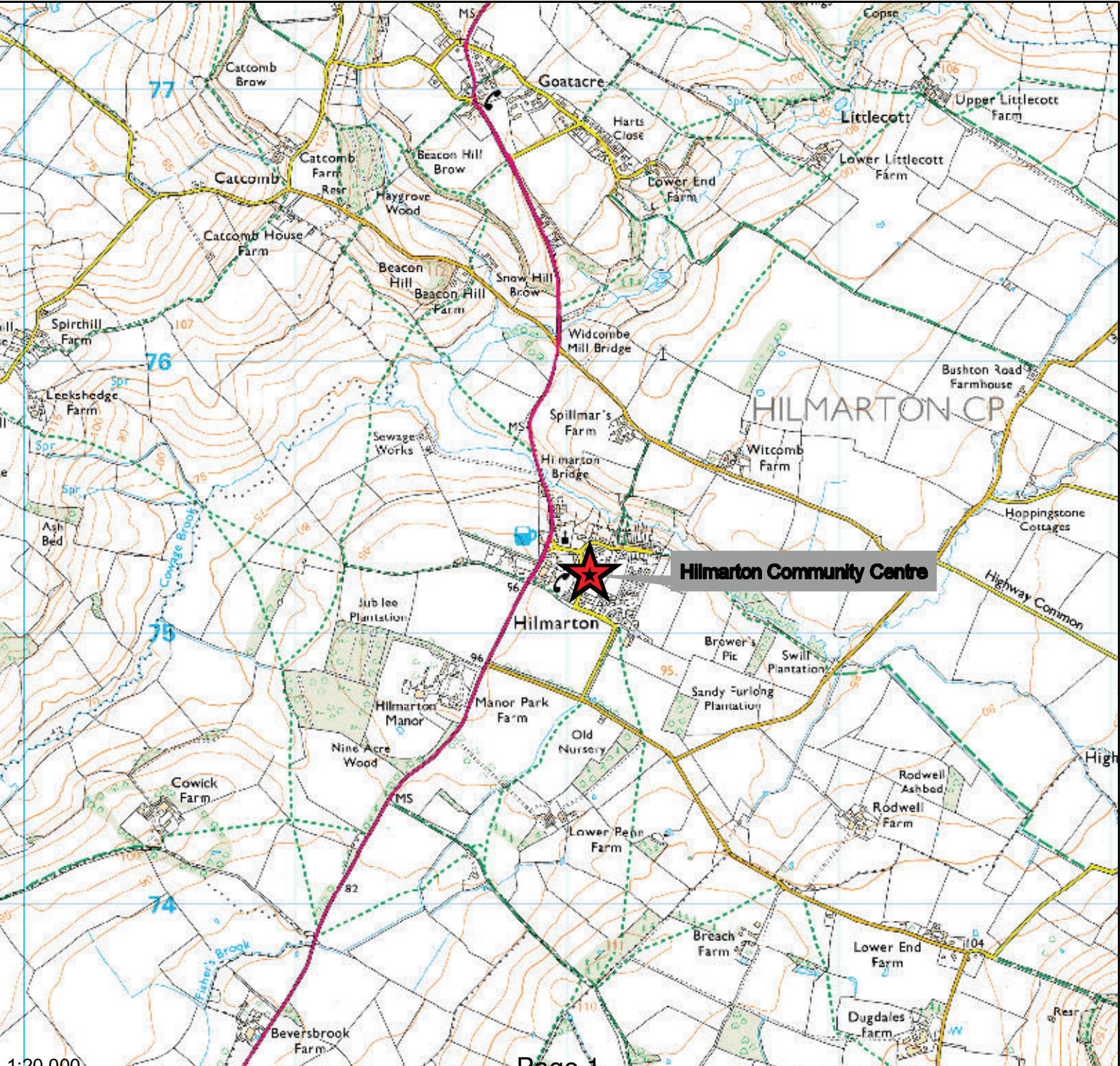
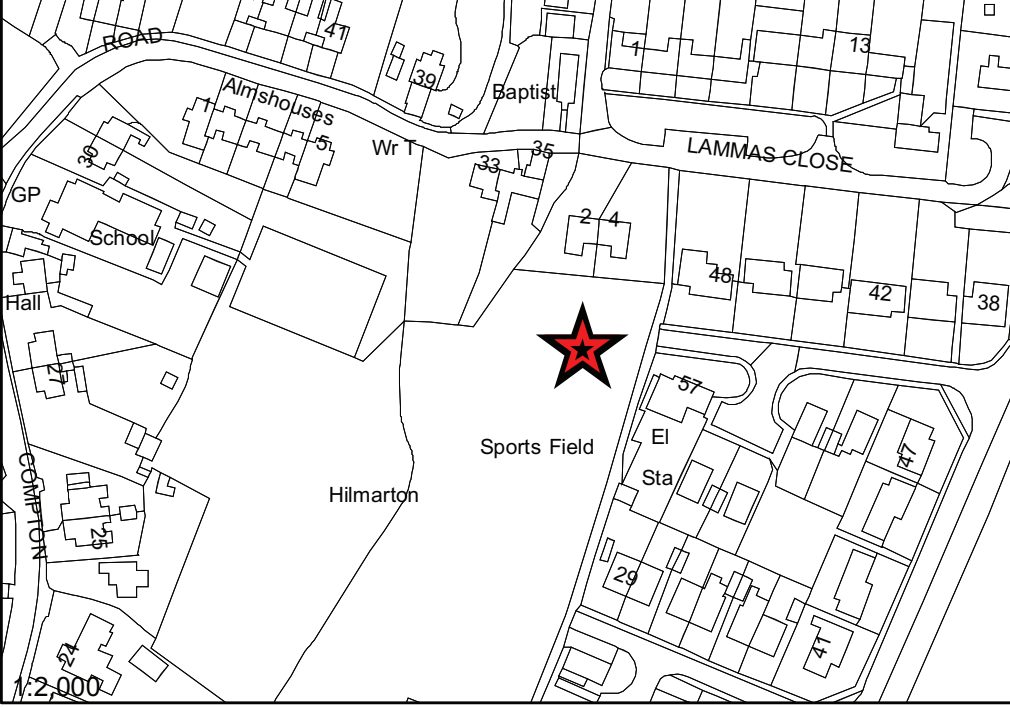
Calne Town Hall

Hilmarton Community Centre,  
Poynder Place,  
Hilmarton,  
Calne,  
SN11 8SQ

Wiltshire Council  
Where everybody matters



Reproduced from Ordnance Survey mapping with permission of the controller of Her Majesty's Stationary Office ©Crown Copyright  
Unauthorised reproduction infringes copyright and may lead to prosecution or civil proceedings.  
Wiltshire Council 100049050 2010





## **Calne Area Board 27 April 2010**

### **Chairman's Announcements**

#### **Proposed Road Closure for Summer Festival**

Calne Town Council have applied for part closure of the A4 on Saturday 19 June 2010 for the summer festival incorporating a carnival procession through the town centre. The proposed closure is from the A4 junction with the Curzon Street Roundabout (from 4.00 until 6.00pm) and Church Street from its junction with The Strand to the Free Church (from 12.00 until 8.00pm).

Signage would be supplied by Calne Town Council and placed on site by their ground staff. Confirmation of insurance renewal for 1 June 2010 with specific inclusion of the event had been received. Comments on the proposal should be sent to reach Lianne Humphries, Technical Administrative Assistant – Traffic Order Team, by 5 May 2010, 01225 713737 or [lianne.humphries@wiltshire.gov.uk](mailto:lianne.humphries@wiltshire.gov.uk).

#### **Air Quality Strategy for Wiltshire**

The Environment Act 1995 places a duty on local authorities to monitor air quality within their areas having regard to national and European air quality objectives.

Wiltshire is a high quality environment, however we have a number of locations where air quality objectives are not being met. These failures are in general associated with vehicle emissions and congestion and have health implications.

We would welcome your views on the Air Quality Strategy, which has been developed as an over arching document detailing our approach to air quality. Consultation on the document remains open until 18<sup>th</sup> June 2010.

If you would like to contribute your views, please contact Gary Tomsett, Environmental Protection Specialist Team Manager, on 01722 434340 or [gary.tomsett@wiltshire.gov.uk](mailto:gary.tomsett@wiltshire.gov.uk).

#### **Consultation on the Review of Special Educational Needs Provision**

Over recent months Wiltshire Council officers have worked with schools, parent representatives and other people to review Special Educational Needs (SEN) provision in the county.

The review relates to the whole of Wiltshire. It is not a cost cutting exercise, the purpose is to more effectively use available resources. The review considers:

- special school provision
- specialist provision that is part of mainstream primary and secondary schools
- SEN support services for schools

A document has been written that sets out what the review has shown and what the Council would like to do in the future. This will now be shared with a wide range of people who are invited to respond to say what they think about the Council's proposals. The publication date is late February 2010. Those being contacted include: parents and carers of children with special educational needs, schools, Diocesan authorities, other Local Authorities, and Trade Unions. As soon as the document becomes available it is also being circulated to Parish Councils, through the Area Boards network, and it will also be available on the Wiltshire Council website.

Any questions about the proposals or the consultation process can be sent in the first instance to Tracy Gates, SEN Project Officer, [tracy.gates@wiltshire.gov.uk](mailto:tracy.gates@wiltshire.gov.uk) 01225 756170.

There are opportunities available to meet with officers to discuss the proposals:

- Sheldon School, Chippenham Wednesday 21 April 7pm
- Kingdown School, Warminster Thursday 22 April 7pm
- Salisbury City Hall, Salisbury Tuesday 4 May 7pm
- St.John's Parish Church Centre, Trowbridge Friday 7 May 10am.

(The evening meetings are preceded by meetings for school staff and school governors.)

The closing date for the consultation is 12 noon Monday 24 May 2010. The content of the consultation responses will be made available to the Elected Members of Wiltshire Council who will make decisions in relation to the proposals.

Most of the proposals that may be subsequently agreed by Elected Members are designed to come into effect from September 2011. An individual plan will be put in place for any individual child or young person affected by any changes.



# MINUTES

**Meeting:** CALNE AREA BOARD  
**Place** Calne Town Hall, Calne, Wiltshire, SN11 0EN  
**Date:** 16 February 2010  
**Start Time:** 7.00pm  
**Finish Time:** 9.10pm

Please direct any enquiries on these minutes to:

Alexa Smith, direct line 01249 706612 or e-mail [alexa.smith@wiltshire.gov.uk](mailto:alexa.smith@wiltshire.gov.uk)

Papers available on the Council's website at [www.wiltshire.gov.uk](http://www.wiltshire.gov.uk)

---

## **In Attendance:**

### **Wiltshire Councillors**

Cllr Chuck Berry (Calne North), Cllr Christine Crisp (Calne Rural) (Vice-Chair), Cllr Alan Hill (Calne South and Cherhill) (Chairman), Cllr Howard Marshall (Calne Central) and Cllr Anthony Trotman (Calne Chilvester and Abberd)

### **Service Directors**

Deborah Farrow (Business Transformation and ICT) and Niki Lewis (Communities, Libraries, Heritage and Arts)

### **Wiltshire Council Officers**

Dave Roberts (Acting Community Area Manager) and Alexa Smith (Democratic Services Officer)

### **Parish and Town Councils**

Bremhill Parish Council – Stephen Cook\*  
Calne Town Council – Glenis Ansell, Mercy Baggs and Amanda Venton  
Calne Without Parish Council – Richard Aylen and Edwin Jones\*  
Cherhill Parish Council – Bob Husband and David Evans  
Heddington Parish Council – Geoff Dickerson\*  
Hilmarton Parish Council – Helen Hodgkinson

\* = nominated representative

### **Partners**

Wiltshire Fire and Rescue Service - Mike Franklin  
Wiltshire Police – PC Monahan  
Calne Community Area Partnership – Francis Bosworth, Malcolm Gull, J Dawson and Anne Henshaw

Bumbling Bees Creation - Geoff Brown  
 Community Hub – Sally Dawson  
 Gazette and Herald – Katie Bond  
 Neighbourhood Watch - Mark Lenton-Jinks  
 Westlea Housing Association – Jo Smith  
 Wiltshire Police Authority - Cllr Chris Caswell and Chris Hoare

**Members of the Public in Attendance: 22**  
**Total Number in Attendance: 54**

<u>Agenda Item No.</u>	<u>Summary of Issues Discussed and Decision</u>	<u>Action By</u>
1.	<p><u>Chairman's Welcome and Introductions</u></p> <p>The Chairman welcomed everyone to Calne Area Board and introduced the Councillors and Officers present, including the new Chief Executive, Andrew Kerr. The Chairman explained that Dave Roberts was standing in as Community Area Manager for Jane Vaughan for the meeting.</p>	
2.	<p><u>Apologies for Absence</u></p> <p>Apologies were received from Cllr Roy Golding (Calne Town Council), Iain Hunter (Wiltshire Fire and Rescue Service), Inspector Kate Pain (Wiltshire Police) and Jane Vaughan (Community Area Manager).</p>	
3.	<p><u>Minutes</u></p> <p>The Chairman approved and signed as a correct record the minutes of the meeting held on 15 December 2009.</p>	
4.	<p><u>Declarations of Interest</u></p> <p>There were no declarations of interest.</p>	
5.	<p><u>Wiltshire Police Authority</u></p> <p>Cllr Chris Caswill gave a short presentation about the work of the Police Authority. The presentation covered the following main points:</p> <ul style="list-style-type: none"> <li>• Police Authorities are independent bodies made up of local people</li> <li>• Wiltshire Police Authority is 6 Cllrs appointed by Wiltshire Council, 3 Cllrs appointed by Swindon Borough Council and 8 independent members</li> <li>• Wiltshire Police Authority deals with appointments, approves the 'policing plan', reviews and makes police budget decisions, deals with complaints, meets in public 4 times per year, scrutinises performance and</li> </ul>	

finance and reports on how the Force is doing and publishes reports and minutes on its website

- Wiltshire Police Authority needs opinion on local policing needs and priorities to help determine objectives and targets for the Force, it would consult communities and community leaders on local policing and report back through the Area Board
- Cllr Chris Caswill was the liaison member for Chippenham and Calne.

Cllr Caswill answered questions from the floor. If you have any questions, please contact Cllr Caswill on: 01249 822088 or by e-mail: [c.j.caswill@btinternet.com](mailto:c.j.caswill@btinternet.com).

**Decision**

**Democratic Services would invite Inspector Kate Pain to give a presentation on the operational aspect of policing in Calne.**

6.

**Partner Updates**

- a) PC Hans Monahan reported that a cannabis factory had been uncovered at Fynamore Gardens following up a lead from the community. He reassured the meeting that a bike meet on 14 March in Hullavington would be managed with minimum disruption to the local area.

On a softer note, Wiltshire Police were holding a fortnightly surgery for elderly people in a residential care home in the town. A Wiltshire Police surgery was also held at the community hub every Wednesday afternoon. 170 young people had attended the previous Bluez N Zuz disco.

**Decision**

**Wiltshire Police agreed to replicate a surgery for elderly people at Marden House Centre in Calne.**

- b) Mike Franklin drew attention to the written report included with the agenda papers. He picked up that Community Fire Safety Checks were ongoing and asked that people continue to report abandoned vehicles and fly tipping to Wiltshire Council in order to reduce the risk of deliberate fires.
- c) The written update from NHS Wiltshire was noted.
- d) Malcolm Gull updated the meeting on the Calne

Community Area Partnership. The update included the following issues:

- The terms of reference had been reviewed and were nearly complete
  - The 2009 community plan had been reviewed and more parish input was important for the next community plan
  - The Partnership sub groups had been reviewed, with changes made to the cultural group and an environmental group set up
  - The community hub was progressing positively and a new sign was being erected
  - Malcolm Gull thanked the Area Board for the second tranche of funding received by the Partnership
- e) Will Kay updated the meeting on the work of the Community Area Young People's Issues Group. He pointed out that the Youth Service also supported the Bluez N Zuz discos. He explained that anti social behaviour recently reported regarding young people on the roofs of local buildings had been misguided training of the local parkour group and this issue was now resolved.

Mr Kay handed over to a young person called Jordan, who spoke about the need for a new skate park in the town. The existing skate park had been designed for BMX use and was in a state of poor repair.

**Decision**

**Will Kay would complete an issues sheet to move the project of a new skate park in Calne forward, in concert with the Town Council and the Area Board.**

- f) There were no updates from the Town and Parish Councils, other than the written update from Hilmarton Parish Council provided at the meeting.

7.

**Community Area Grants**

Consideration was given to three funding applications made to the Community Area Grants Scheme.

**Decision**

**Hilmarton and Goatacre Group Improving Safety (HAGGIS) were awarded £2,140 towards traffic calming measures on the A3102.**

**Reason**

*The above application met the Community Area Grant Criteria for 2009/10 and the project would engage with local people, work towards increasing the number of people who feel safe in their communities and may help reduce deaths through accidents. HAGGIS was also increasing the number of people involved in regular volunteering.*

**Decision**

Calne Community Area Young Peoples Issues Group were awarded £3,665 towards a power kiting and land boarding club.

**Decision**

The above funding was conditional upon the Youth Development Co-Ordinator, Wiltshire Alternative Youth Sports and Wiltshire Area Sports Partnership working together to develop a structured approach for co-ordinating all the various groups currently active in the Calne Community Area, to ensure that Calne is recognised as a centre for alternative sports.

**Reason**

*The above application met the Community Area Grant Criteria for 2009/10 and it would improve young people's participation in positive activities, engage with local people, encourage life style change, impact positively on the health of individuals and work towards reducing actual and perceptions of anti social behaviour.*

**Decision**

Calne Community Area Partnership Environmental Group were awarded £5,000 towards developing a 'Friends of the Abberd Brook' Group and advancing community issues through projects and restoration.

**Reason**

*The above application met the Community Area Grant Criteria for 2009/10 and would engage local people, increase volunteering, encourage life style change, impact positively on the health of individuals, improve young people's participation in positive activities, increase the number of people who feel safe in their community, improve the local area through intergenerational activities,*

	<p><b><i>reduce perceptions of anti social behavior, reduce carbon emissions and improve local biodiversity.</i></b></p> <p>The Chairman noted the good news that a large proportion of funds available to the Area Board had now been awarded to the Community Area.</p>	
8.	<p><u>Your Local Issues</u></p> <p>The Chairman announced that feedback on the previous Area Board meeting had been positive and outreach venues would continue to be used on an alternate basis to town venues. Suggestions for suitable venues were invited, please contact Alexa Smith on: 01249 706612 or e-mail: <a href="mailto:alexa.smith@wiltshire.gov.uk">alexa.smith@wiltshire.gov.uk</a>.</p> <p>Following the recent weather, Wiltshire Council’s highways team was working round the clock to repair damaged roads in the county. The meeting was encouraged to report serious potholes to CLARENCE on 0800 232323 and they would be filled in as soon as possible.</p> <p>a) Calne Community Area Board had received a number of issues that may be appropriate for putting forward to the Community Speed Watch initiative that Wiltshire Council was developing with Wiltshire Police and the Wiltshire and Swindon Safety Camera Partnership.</p> <p>The initial process designed for the Community Speed Watch scheme was based on assumptions of high numbers of speeding issues being received and so it involved a lengthy process of assessing and prioritising sites. However in the Calne Community Area, although a number of issues had been received, they were not in the numbers initially expected. As such it was proposed that appropriate sites would be sent forward as they emerged, rather than in prioritised groups, and that the Chairman would inform the Area Board through this update at subsequent meetings. If volumes of speeding issues should start to arrive in large numbers, the Area Board would revert to its original process.</p> <p><b><u>Decision</u></b>  <b>To forward 3 sites to Community Speed Watch:</b></p> <ul style="list-style-type: none"> <li>• <b>A3102 at Hilmarton/Goatacre – issue number 585</b></li> <li>• <b>A4 at Derry Hill – issue number 653</b></li> <li>• <b>Church Road at Derry Hill – issue number 500.</b></li> </ul>	

**Decision**

**To forward future appropriate sites for Community Speed Watch without prioritisation (unless/until there was a significant increase in numbers).**

- b) Cllr Crisp provided an update on the Community Hub in Calne. Please find a written report regarding the Community Hub attached.

**Decision**

**That the Community Hub Building - 27 High Street, Calne - would be made available to the Community Partnership for use as a Community Hub, providing that the Partnership ensured that the relevant change of use planning consents were in place.**

**That for the first year of this tenancy agreement Wiltshire Council would waive the entire rental value. In return the Partnership would maintain and improve the fabric of the building wherever possible and ensure that it was open to the community for a minimum period of 4 days per week, including a Saturday whenever possible.**

**The Partnership would also undertake continued, rigorous evaluation of the project throughout the pilot phase, identify ways to ensure that the project plans become more sustainable in future years, and adopt a robust exit strategy.**

- c) Please find a written report regarding the Abberd Brook Project attached. The Friends of Abberd Brook invited anyone who was interested in becoming involved to get in touch with Francis Bosworth: 01249 824722 or e-mail: [fbosworth1@hotmail.com](mailto:fbosworth1@hotmail.com) or Frank Rumble: [grandpafrank@talktalk.co.uk](mailto:grandpafrank@talktalk.co.uk).
- d) Cllr Berry provided an update on 'Make a Stand for Cycling'. Local people had said they wanted to be able to cycle around the Community Area and park their bikes in convenient places more easily.

The Community Partnership/Area Board had identified a list of 14 potential places where cycle stands could be sited and then the community voted for their top priorities. 157 people had returned forms at Bank House, at the Community Hub or by mail.

The top 5 sites were:

- \* Heddington Primary School

- \* Beversbrook Sports Ground
- \* John Bentley School
- \* Calne Leisure Centre
- \* Calne Town Centre.

Original investigations made in preparation for the project were based upon installing 4 units onto existing hard standings. Site proposals put forward by the top 5 sites have included 2 which are not on an existing surface (Heddington Primary School and Beversbrook Sports Ground) and so, would need additional resource in order to achieve implementation. In addition to the top 4 sites, Wiltshire Council Highways department had committed to install stands at the Town Hall and Bank House location funded from within their budget.

As such, and as there is no further opportunity to consider Area Board Community Grants within the current financial year, it was proposed that the outstanding Area Boards budget would be committed towards the implementation of a new surface at Heddington Primary School and that implementation of the stand at Beversbrook was delayed until after the 1st April 2010.

**Decision**

**5 cycle stands would be implemented (1 more than was initially planned for), as detailed above.**

**Decision**

**The outstanding Area Boards budget would be committed towards the implementation of a new surface at Heddington Primary School and that implementation of the stand at Beversbrook was delayed until after the 1st April 2010.**

Councillor Trotman provided an update on Marden House. Trustees would like to continue with signing the lease. Attached to the House was the Mill Race Centre, for those with mental health, learning or physical disability. Marden House relied to an extent on rent from the Mill Race Centre and Officers were working to make sure this funding stream remained in place.

9.	<p><u>Cabinet Representative</u></p> <p>Cllr Toby Sturgis gave a short presentation regarding his</p>	
----	---	--



Cabinet responsibility for Waste, Property and Environment.

A planned public consultation into possible changes to Wiltshire's waste and recycling service which was due to start shortly, would now not take place until after the General Election. The reason for this decision was that there appear to be differing national policies regarding future waste and recycling services emerging from Whitehall which have caused confusion and uncertainty. It would, therefore be inappropriate to hold a consultation until the council had a clear steer on the national policy following the General Election. Wiltshire Council wished to apologise to local people for having to withdraw this consultation which had been committed to, but did not want to waste local people's time or money in seeking their views when it might not be possible to implement preferred options. In the meantime, waste and recycling services would continue to operate as currently provided.

Cllr Sturgis then answered questions from the floor. These included the following topics:

- Transfer of properties - Wiltshire Council were looking to have short term fixes of anything from a 1 year period
- Asset disposal, relating to the stretch of the River Marden running through Calne town centre, consisting of the area in front of the Beach Terrace and between the Town Hall and Marden House
- Wiltshire Council were keen to collect hard plastic again (this was put on hold after contaminated waste was returned from Brazil from the Hills Group) and were seeking an alternative contractor
- The Environment Agency were responsible for policing the Hills Group site on an environmental basis

**Decision**

**The Environment Agency would be invited to attend a future Area Board meeting.**

10.

**Any Questions**

The Chairman invited questions from the floor and any other business. The closure of RAF Lyneham was raised as an important issue relating to Calne Community Area. The neighbouring Wootton Bassett and Cricklade Area Board was involved in work about this issue, if people from the Calne Community Area would like to be involved, please contact Alexa Smith on: 01249 706612 or e-mail:

	<p><a href="mailto:alexa.smith@wiltshire.gov.uk">alexa.smith@wiltshire.gov.uk</a>. Andrew Kerr reassured the meeting that the closure of RAF Lyneham was high on his agenda.</p> <p>Denise Cooper from Westlea Housing Association stated there would be a Stokes Croft Fun Day on Saturday 6 March from 11-1.30pm around The Green, to address levels of dissatisfaction and promote the service. Comment was made from the floor on the poor state of some Westlea housing.</p> <p>There would be a consultation in mid March regarding library opening hours. Information was available from the Information Office in Calne and the library itself.</p>	
11.	<p><u>Close</u></p> <p>The next meeting for Calne Area Board was Tuesday 27 April 2010 at Hilmarton Community Hall, with refreshments available from 6.30pm for a 7.00pm start.</p>	

## Sergeant's message

Sergeant Connor is again performing 'other duties' for a short period; so it is with great pleasure that I address you in my supporting role Calne's Acting Sergeant. As last time, the over riding theme as far as I am concerned is the continued hard work performed by the Calne NPT in conjunction with our partner agencies and networks.

I feel it is appropriate at this point to mention the fact that Sergeant Connor has recently received an award (as some of you may have seen in the local paper) The Divisional Commanders Certificate of Merit was awarded to Sergeant Connor for the outstanding detection rate in the town, and the huge reduction in crime (24%) Sergeant Connor fully deserves this praise, and I have no doubt that you will all wish to join me in congratulating him for all his efforts!

We continue to support Calne Town CCTV, and since the last document was produced I am pleased to announce that the Drug Presentation has been delivered to around twenty of the volunteers. Feedback has been very positive from those who attended! It is planned that a further presentation may be made in the near future, and consideration is also being given to 'widening the audience' in terms of those groups who we make the presentation to.

Whilst on the subject of 'volunteers', I am currently trying to set up a scheme within Calne NPT to have civilian volunteers working at the station carrying out a variety of duties. The overall aim is to allow the Officers and PCSO'S more time out on the street, something which I am sure we would all welcome!

If you are interested in volunteering, or know anyone who may be, then please make contact with either myself or Sergeant Connor.

Calne NPT is currently working hard with the local authority, and other partners, to get an ASBO on one of Calne's persistent offenders. It is never an 'easy' process but I am pleased to say that the combined efforts of all involved have meant that good progress has been made and it is my anticipation that a successful application will be made within the coming few weeks!

These are examples of just some of the ways in which we aim to make the local community as safe as possible. Should you have any suggestions or queries for us then please feel free to contact me, or one of the Calne NPT members.

Lastly an update about the new Police Station. Work is progressing well, and the schedule remains on track. There is already a roof structure visible over the exterior safety boarding and the external walls are all but completed. As the completion date draws closer we are considering how best to open the new station, various ideas have been put forward but if you have a suggestion then please feel free to make it! As last time, please remember that we are here for the local community and still maintain a constant presence in the town. We can still be contacted via the normal means.

**Simon Wright**  
Acting Sergeant Calne NPT

## Crime Statistics:

The following statistics compare a 3 month period (Dec/ Jan/ Feb) in 2008/09 and 2009/10. They have been taken from the Wiltshire Police Website and represent the average number of crimes in the area.

### Town Centre:

Date/ Type of Crime:	Burglar y:	Anti- Social Behaviou r:	Violenc e:	Vehicl e Crime :	Robber y:	Total Crimes:	Explanation:
Dec/ Jan/ Feb 2008/0 9:	3.3	47	10.3	1	0	47.3	<b>Anti-social behaviour</b> shows a steady increase. It should be noted that under Home Office rules ASB includes public order offences. Recently due to partnership working with CCTV and active patrolling FPN's have been issued for section 5 offences, littering and possession of cannabis.
Dec/ Jan/ Feb 2009/1 0:	7	73.7	8	2.3	0	37	<b>Violent Crime:</b> shows a decrease in incidents which is a reflection of positive police presence within the town and targeted evening patrols.

### Calne Rural:

Date/ Type of Crime:	Burglary:	Anti-Social Behaviour:	Violence:	Vehicle Crime:	Robbery:	Total Crimes:	Explanation:
Dec/ Jan/ Feb 2008/09:	3.7	17.3	3.7	0.7	0	18	<b>Anti-social Behaviour:</b> has recently decreased. We received a lot of reports of ASB last year due to youngsters in Lower Compton, however they have been identified and letters sent home to their parents. This seems to have solved the problem.
Dec/ Jan/ Feb 2009/10:	6	7.7	18.3	4.3	0.3	58	

## Priorities & ongoing activity:

### **Town Centre Priorities -**

- **Anti-Social Behaviour Newcroft Road:** This priority began in mid November 2009 after receiving a number of complaints from residents in the area of anti-social behaviour and criminal damage; also including verbal abuse of a homophobic nature particularly towards the area of the flats. Reassurance patrols are being carried out and Westlea Housing Association are currently installing cameras to help gather intelligence and evidence. Police are actively engaging with local residents to target the issues effectively. Since the last report two people have been arrested in from the Street in connection with the priority. No further issues have been reported and it is anticipated that the priority will soon be closed.
- **Anti-Social Behaviour Broken Cross Health Centre:** This is another new priority that was started at the end of December 2009. There are complaints from the staff at the Broken Cross Health Centre of youths congregating at night. There is a significant amount of litter and broken glass found after the weekends. Discussions are taking place with staff from the family health centre with the possibility of installing CCTV cameras. Regular patrols in the area have been made but to date very few groups have been found. Police have requested the Health Centre address certain issues relating to site furniture to help alleviate the problems.

### **Rural Priorities -**

- **Police Visibility and Reassurance patrols in villages surrounding Calne:** This in an ongoing priority which has been running since July 2009, we believe it's very important to continue these patrols as there have been some Rogue Trader and Distraction Burglaries in the area over recent months which have caused the residents some concerns. This also involves the use of Neighbourhood Watch Schemes and Public Consultations. The Police will be conducting regular patrols through all villages in the Calne Rural Neighbourhood Police Team area. This will help to reassure members of the public, enable the police to gain intelligence through vehicle and person stop checks, and be a visible deterrent to traveling criminals. Trading Standards Officers will be contacted for their advice and input when required.
- **Anti-Social Behaviour in the Lower Compton area/ Hills Waste:** This priority was started at the end of Nov 2009 due to a number of reports that were received relating to anti-social behaviour on the estate and thefts and criminal damage at the Hills waste/ recycling centre. In Dec numerous anti-social behaviour warning letters were issued to youths that live on the Lower Compton estate that were suspected of being involved. This seems to have worked as we haven't received any further complaints. Patrols will continue to be carried out, specifically in the evenings and at weekends. We will also continue working alongside management from Hills Waste. This priority is likely to be closed soon as no further reports have been received.

## **Examples of Ongoing Positive Arrests/ Warrants/ Targeting ASB in the Calne area over the past weeks.**

- 1) The Blues and Zuz discos have continued to go from strength to strength; the latest Disco at Easter saw a record attendance of 220 young people. The event saw the Chief Constable, Mr. Brian Moore, arrive for the last hour and he was given the privilege of drawing the winning raffle ticket. The prize was a Nintendo Wii, and a very grateful young lady from Calne was the winner! The next disco is planned for Friday 16<sup>th</sup> April and will be held at John Bentley. PCSO Sarah Hardwidge has been nominated for an award to reflect the excellent work achieved in this area.
  
- 2) A successful warrant was executed at an address in William Street where a known drug dealer lives. A quantity of drugs was located and two people were arrested from within the property. One person was charged with three separate offences of Possessing Class A and C drugs. A second person was charged with possessing a Class B drug.
  
- 3) A Cannabis factory was located in Fynamore Gardens, Calne following some good work by the PCSO'S; they had been given a lead by a neighbourhood watch coordinator in the area. The factory was a significant find and as it stands two people are still on Police Bail pending further enquiries.
  
- 4) The NPT have made significant efforts in recent weeks to broaden the ways in which it engages with the community. The PCSO's now regularly attend the Boxing Club at the new Beversbrook Sports facility; this has gone down well with organizers and those attending too! Links with the Springfield School have been tightened with officers attending and speaking with both teachers and students on a regular basis. The 'Hub' is now open in the old Goldman's shop on the High Street, Calne. Consultations are held here by the NPT every Wednesday afternoon between 1400 and 1530hrs. The PCSO'S now make a weekly appearance on the Mobile Library that visits the outlying villages, another ideal opportunity to engage with the community!



# Wiltshire Fire & Rescue Service

Wiltshire and Swindon Fire Authority

## Report for Calne Area Board

### Fires

The number of accidental fires that WFRS attended within the Board's area during January and February 2010 was 8. These involved food, clothing behind a radiator, a shed and a large, protracted fire at a landfill site. The remaining 4 involved chimney fires.

WFRS continued to see a decrease in the number of deliberate fires that we attended during the same period, there being 1 incident of this type. However, this particular incident could have had very serious consequences when an external bin was set alight which then spread to a nearby property. In this instance it was able to be extinguished at an early stage. We continue to work with other agencies to identify persons who are responsible for deliberate fire setting.

### Injuries

No individuals have been injured through any fire related incident that we have attended during January and February 2010.

### RTC'S

WFRS have attended 5 Road Traffic Collisions within the Boards area during January and February 2010. These incidents have occurred in a variety of locations.

### Community Safety

Community Fire Safety Activities continue to focus on Chimney Fire Safety. We have seen an increase in these types of incidents in recent weeks. As it has been a long, cold winter we would advise occupiers to have their chimneys swept regularly, as they may have been used on a more frequent basis than in previous years.

With reference to an incident that we have recently attended it would seem opportune to remind individuals to consider kitchen safety, in particular to not leave their cooking unattended, and to keep all cooking appliances and utensils clean and free from a build up of grease.

For further information please visit [www.direct.gov.uk/firekills](http://www.direct.gov.uk/firekills)







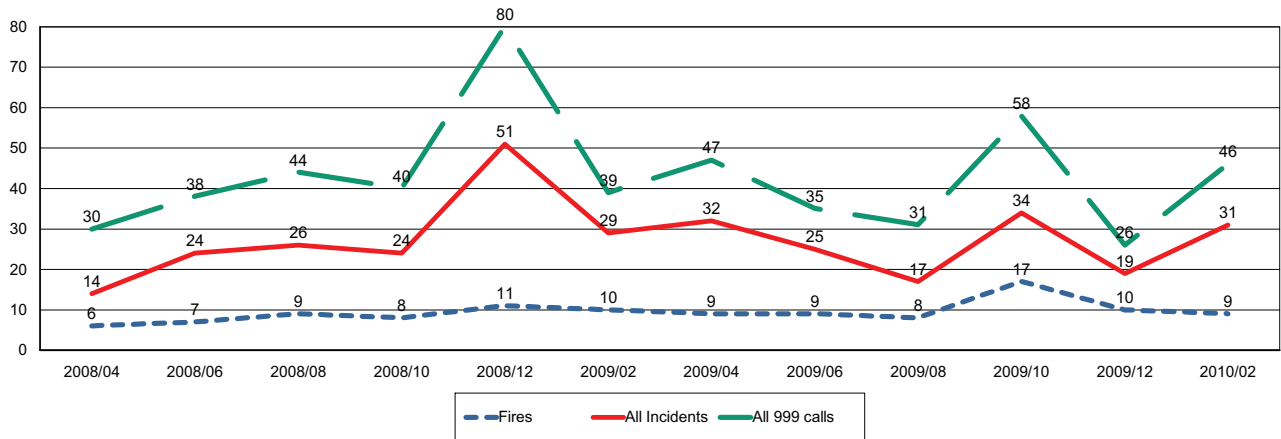
# Wiltshire Fire & Rescue Service

Wiltshire and Swindon Fire Authority

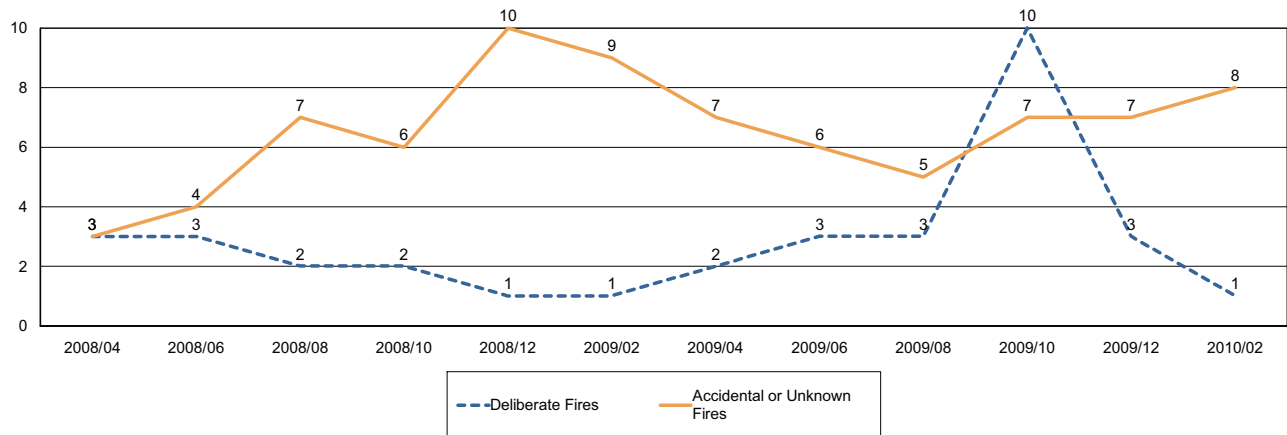
## Report for Calne Area Board

The following is a bi-monthly update of Fire and Rescue Service activity up to and including February 2010. It has been prepared by the Group Manager for the Board's area.

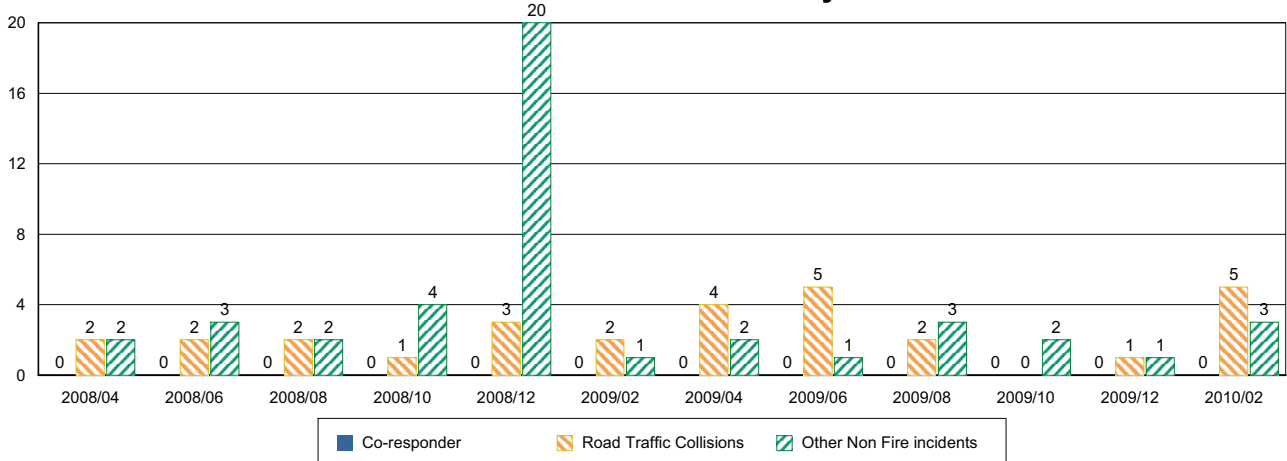
### Incidents and Calls



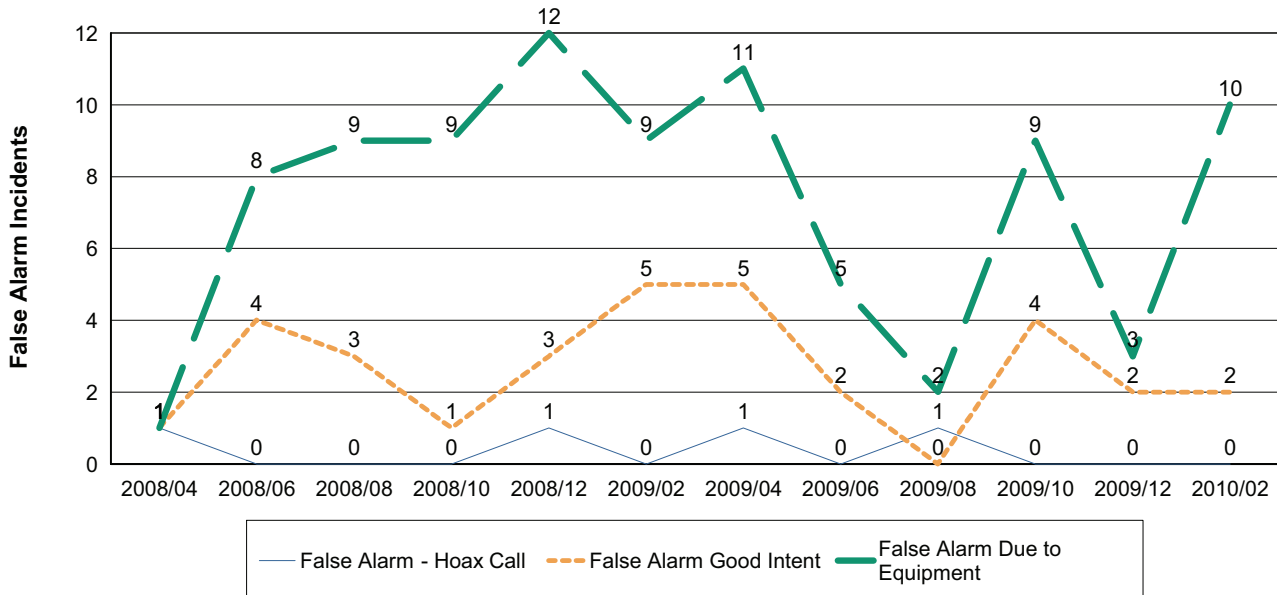
### Fires by Cause



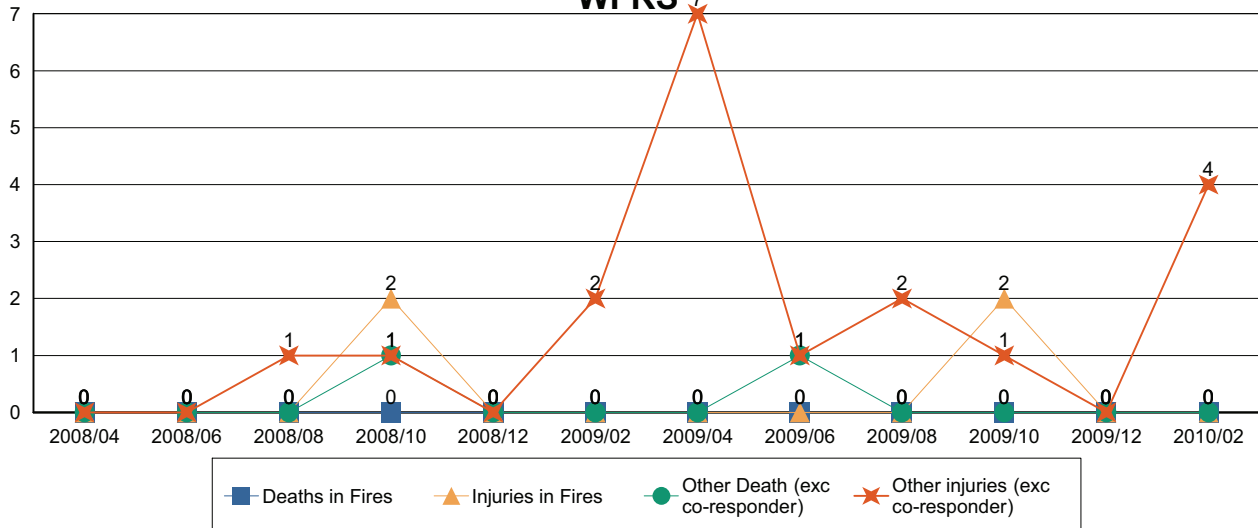
### Non-Fire incidents attended by WFRS



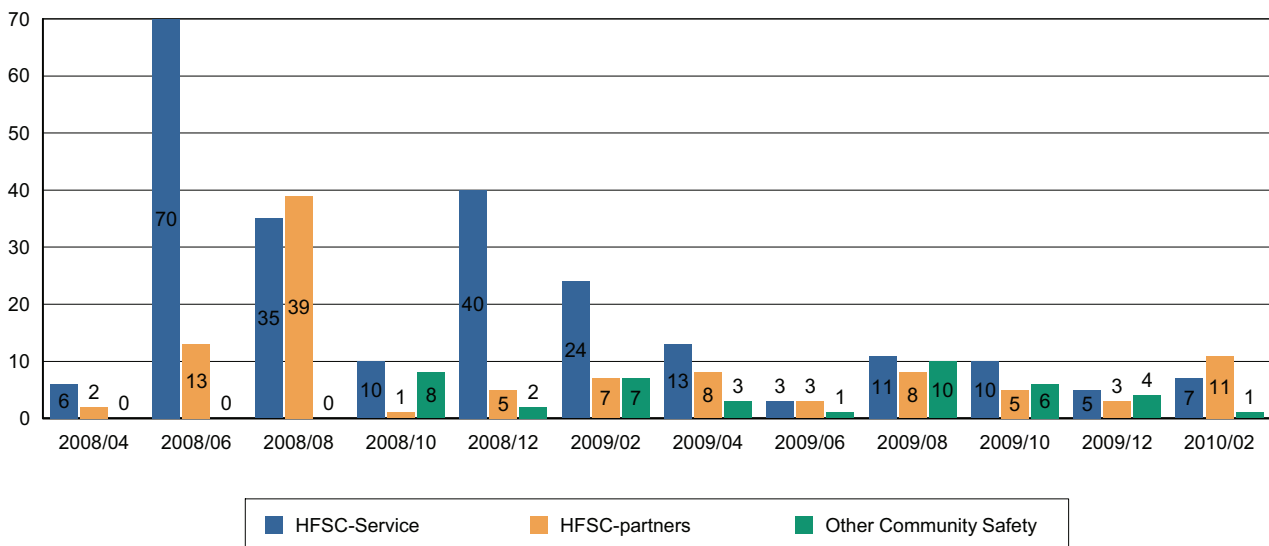
### Number of False Alarm Incidents



### Death & Injuries in incidents attended by WFRS



### Home Fire Safety Checks and other domestic safety



Comments and Interventions overleaf

**NHS Update - April 2010****Proposal for Primary Care Centre at Quakers Walk will not proceed**

The proposal for the development of a Primary Care Centre at Quakers Walk was brought for consideration to NHS Wiltshire by the town's GPs, who were to manage the PCC, and the developers, the Bristol-based charity the St Monica Trust, in November 2009. A planning application was submitted to Wiltshire Council by the St Monica Trust in February 2010. At meetings on Thursday 18th March and Friday 19th March with representatives of the St Monica Trust and the GPs, the parties came to the conclusion that they could not progress the scheme in a way which meets all of their requirements.

Chief Executive of NHS Wiltshire, Jeff James, said:

"We are disappointed that this proposal has not reached a positive conclusion. Though the financial environment has changed since we made our plans in January 2007, we are keen to fulfill our commitment to provide better facilities for primary care services in Devizes. However, in spite of hard work and a constructive approach to negotiation on everyone's part, it has not been possible to put together a commercially viable proposal which works for the St Monica Trust, the GPs and the PCT". The Primary Care Trust will begin looking to see whether the proposal to develop the Green Lane site can be re-visited.

**Changes to out-of-hours service**

From April 1, NHS Wiltshire has commissioned a single provider, Wiltshire Medical Services, to run out-of-hours medical and dental services across the whole of Wiltshire. NHS Wiltshire is confident that the new service will offer a robust, consistent and high-quality service right across the county.

Wiltshire Medical Services (WMS) is a well-established company run by local GPs, which previously provided out-of-hours care to a large part of the county. The service uses no agency or locum doctors, and most doctors work in daytime general practice in or near Wiltshire, giving them knowledge of the local area as well as specialist experience in urgent, out-of-hours medicine.

The new service will operate from all the existing out-of-hours bases, plus two new ones - at the Great Western Hospital, Swindon, and Warminster. As at present, patients will access the service by phoning their GP. They will then be given a number to call (0300 1115717) via answerphone message, or automatically diverted.

Once through to the Out-of-hours service, your call will be handled by a team of nurses and doctors, who will then either:

advise you on how to manage your problem yourself  
ask you to come in to be treated at your most convenient treatment centre or, if appropriate  
send a member of the clinical team to visit you in your own home

The treatment centres have been chosen to provide an improved geographical spread across the county. For patients, the new service will be as good, or better than it is at the moment. It will provide consistent care across the county, and will have increased capacity for home visits, particularly important in an area with many isolated rural communities.

Amesbury Health Centre  
Salisbury Hospital  
Warminster Community Hospital  
Trowbridge Community Hospital

Chippenham Community Hospital  
The Great Western Hospital, Swindon  
Marlborough (Savernake Hospital)  
Shaftesbury Hospital

The service will be provided by a mix of GPs, Nurse Practitioners and Emergency Care Practitioners, most of whom are already working in Wiltshire and familiar with the local area.

WMS was chosen to provide the service after a competitive bidding process, on the basis of their history of providing a locally-based, service of the highest quality. They have previously provided out-of-hours services across most of the county apart from the south, and have long-standing experience. Two of the directors work as GPs in Wiltshire.

The out-of-hours service is part of a package of urgent and emergency care offered by the NHS. In an emergency (e.g. serious injury, loss of consciousness, chest pain or suspected stroke), patients should always phone 999. For healthcare advice over the phone, NHS Direct is available on 0845 4647.

### **Bowel Cancer Screening Programme rolls out in the South West**

The Bowel Cancer Screening Programme (BCSP) will be fully rolled out across the South West this month. Nearly half a million screening kits have been sent out across the region since the introduction of the programme and already more than 350 cancers have been detected.

The next Board meeting will be held on **26 May 2010, in the Conference Room at Southgate House, Devizes**

Papers are published a week before the meeting on [www.wiltshire.nhs.uk](http://www.wiltshire.nhs.uk) or on request from Maggie Goodman, NHS Wiltshire (tel: 01380 733827, email: [maggie.goodman@wiltshire.nhs.uk](mailto:maggie.goodman@wiltshire.nhs.uk))

For further information or copies of documents referred to above, please contact Jo Howes, Community Engagement Manager, 01380 733929 or [jo.howes@wiltshire.nhs](mailto:jo.howes@wiltshire.nhs)

<b>Report to</b>	<b>Calne Community Area Board</b>
<b>Date of Meeting</b>	<b>27<sup>th</sup> April 2010</b>
<b>Title of Report</b>	<b>Community Area Grants</b>

## Purpose of Report

To ask Councillors to consider 4 applications seeking 2010/11 Community Area Grant Funding

1. **Calne Community Day Centre**, requesting £685 to provide equipment that will stimulate physical activity and social interaction and sport for people aged over 60 through developing opportunities to play new age curling.

Officers recommend that a grant of £685 is awarded.

2. **Calne Community Church**, requesting £995 towards a 'Children's Village Project' as a part of the Calne Summer Festival.

Officers recommend that a grant of £995 is awarded

3. **Summer Fun in Calne Play scheme**, requesting £1070 towards providing a 4 week programme of inclusive activities for young people and children during the summer holidays

Officers recommend that a grant of £1070 is awarded, conditional upon the balance of funding being in place.

4. **Calne Partnership of Churches**, requesting £2,000 towards providing weekly drop in activity sessions for young people delivered through the 'Open Blue Bus' in the town centre.

Officers recommend that a grant of £2,000 is awarded, conditional upon the balance of funding being in place.

## 1. Background

- 1.1. Area Boards have authority to approve Area Grants under powers delegated to them by the Deputy Leader and Cabinet member for Community Services (27 February 2010). Under the Scheme of Delegation Area Boards must adhere to the Area Board Grants Guidance for funding.
- 1.2. In accordance with the Scheme of Delegation, any recommendation of an Area Board that is contrary to the funding criteria would need the approval of the Leader, the appropriate Cabinet Member or the Cabinet.
- 1.3. In accordance with the Area Board Grants Guidance officers are required to provide recommendations in their report, however, the decision to support applications and to what level is made by Wiltshire Councillors on this Area Board.
- 1.4. One applicant was not able to confirm permission to run their project and has withdrawn their application; this group hopes to reapply at a future date. Another application did not meet the funding criteria and had not secured match funding, this group was advised to consider reapplying to the Area Board with alternative schemes and to contact The Charities Information Bureau (CIB) for advice on other streams of funding that would enable match funding. CIB work on behalf of Wiltshire Council to support community and voluntary groups, town and parish councils to seek funding for community projects and schemes both from the Area Board and other local and national funding sources.
- 1.5. Funding applications will be considered at every Area Board meeting.
- 1.6. The Calne Area Board has been allocated a 2010/2011 budget of £42,852 for community grants, community partnership core funding and councillor led initiatives. The carry forward from the 2009/2010 budget is £232 (accrued through recouped VAT payments). This leaves a total budget of £43,084 for the 2010/2011 budget. (see appendix 1 for further details)
- 1.7. A decision has been made in 2010/2011 that paper copies of funding applications will no longer appear as part of the agenda in an attempt to reduce volume of paper used. However, the application forms will be available on the Wiltshire Council web site and hard copies available upon request.
- 1.8. The 2010/2011 funding criteria and application forms are available on the council's website ([www.wiltshire.gov.uk/areaboards](http://www.wiltshire.gov.uk/areaboards)) or paper versions are available from the Community Area Manager.

<b>Background documents used in the preparation of this Report</b>	<ul style="list-style-type: none"><li>• Community Area Grant Application Pack 20010/11</li><li>• Calne Community Area Plan – 2004-14 (and 2006 update)</li><li>• Kent Sports Development Unit – <a href="http://www.kentsport.org/pdfs/new_age_kurling_factsheet.pdf">www.kentsport.org/pdfs/new_age_kurling_factsheet.pdf</a></li><li>• Indices of Deprivation 2000 – Child Poverty</li></ul>
--	--

## **2. Main Considerations**

- 2.1. Councillors will need to be satisfied that grants awarded in the 2010/11 year are made to projects that can realistically proceed within a year of the award being made.
- 2.2. There will be 6 rounds of funding during 2010/11. The first is contained in this report the remaining will take place on;
  - 29<sup>th</sup> June 2010 – (deadline for applications: 25<sup>th</sup> May 2010)
  - 24<sup>th</sup> August 2010 – (deadline for applications: 19<sup>th</sup> July 2010)
  - 26<sup>th</sup> October 2010 – (deadline for applications: 20<sup>th</sup> September 2010)
  - 7<sup>th</sup> December 2010 – (deadline for applications: 1<sup>st</sup> November 2010)
  - 8<sup>th</sup> February 2011 – (deadline for applications: 3<sup>rd</sup> January 2011)

## **3. Environmental & Community Implications**

Community Area Grants will contribute to the continuance and/or improvement of cultural, social and community activity and wellbeing in the community area, the extent and specifics of which will be dependent upon the individual project.

## **4. Financial Implications**

- 4.1. Awards must fall within the Area Boards budget allocated to the Calne Community Area Board.
- 4.2. If grants are awarded in line with officer recommendations, the Calne Community Area Board will have a balance of £38,334.

## **5. Legal Implications**

- 5.1. There are no specific Legal implications related to this report.

## **6. HR Implications**

- 6.1. There are no specific HR implications related to this report.

## **7. Equality and Inclusion Implications**

- 7.1. Community Area Grants give all local community and voluntary groups, Town and Parish Councils an equal opportunity to receive funding towards community based projects and schemes.
- 7.2. Implications relating to individual grant applications are outlined within section 8 – “Officer Recommendations”.

## 8. Officer recommendations

Ref	Applicant	Project proposal	Funding requested
8.1 <b>006</b>	Calne Community Day Centre	Providing equipment that will stimulate social interaction and physical activity through developing opportunities for people over 60 to play new age curling.	£685

- 8.1.1. It is recommended that Calne Community Day Centre is awarded a grant of £685 to provide equipment that will encourage social interaction and physical activity amongst people aged over 60.**
- 8.1.2. Officers are of the opinion that this application meets grant criteria for 2010/11
- 8.1.3. Significant issues around the lives and opportunities of older people in the community are emerging as issues in the review of the Community Area Plan. The Community Area Partnership has recently appointed an 'older people's champion' in response to these issues.
- 8.1.4. Calne Community Day Centre aims to provide/assist in providing facilities for people aged 60 or over from the Calne Community Area who have specific needs as a result of age or infirmity.
- 8.1.5. The applicant aims to provide opportunities for members of the day centre to become more socially interactive and active within the centre and with members of other day centres through engaging in New Age Curling, an indoor form of the original curling game, which is gaining in popularity internationally. It is now played in 47 countries and could potentially become a Paralympic sport in 2012.
- 8.1.6. An award to this group will enable it to acquire all of the specific equipment that is necessary to play this sport and will also enable volunteers to facilitate and develop sessions.
- 8.1.7. New Age Curling can be played by both able bodied and disabled people of all ages at an equal level. It was developed with help from Disability Sport England, is used as part of rehabilitation programs in hospitals, falls into national government guidelines for exercise and is recognised by most UK disabled unions.
- 8.1.8. If the Area Board makes a decision not to fund this project it will be delayed whilst alternative sources of funding are identified and the benefit to older people from the community area will be delayed.



Ref	Applicant	Project proposal	Funding requested
8.2. 07	Calne Community Church	Children's Village as part of the Calne Summer Festival	£995

**8.2.1. It is recommended that Calne Community Church is awarded a grant of £995 in order to enable a 'Children's village' to be run as a part of the Calne Summer Festival.**

8.2.2. Officers are of the opinion that this applications meet grant criteria for 2010/11

8.2.3. In addition the application makes direct links to the Calne Community Area Plan through activities and events that encourage children and young people to take a constructive role in the community, and creating opportunities to build community cohesion and a sense of pride and wellbeing.

8.2.4. The Calne Community Church is leading on the organisation of this project but is working alongside other groups and agencies to develop and deliver the event. (Including Calne Community Area Partnership, the Calne Community Group, and local schools in the Community Area).

8.2.5. This project will provide professionally facilitated workshops to teach and help children and young people to learn skills linked to carnival such as face painting, mask and costume making. The workshops will focus upon producing beautiful creations from waste/scrap materials. These skills, and the creations that have been produced, will then be utilised as the children and young people take part in the Summer Festival Carnival parade later in the day.

8.2.6. Activities will be free of charge and so open to children and young people of all social backgrounds. Although the project is being led by Calne Community Church, it will not have any specifically religious aspect to it and is open to people of all faiths.

8.2.7. If the Area Board makes a decision not to fund this project it will need to identify other sources of funding or will not be able to take place. This could have a detrimental effect upon ambitions to promote a sense of community pride and well being.

Ref	Applicant	Project proposal	Funding requested
8.3. <b>008</b>	Summer Fun in Calne	4 week summer holiday play scheme for 5 – 13 year olds	£1,070

**8.3.1. It is recommended that Summer Fun in Calne is awarded a grant of £1,070, conditional upon the balance of funding being in place.**

8.3.2. Officers are of the opinion that this application meets grant criteria for 2010/11

8.3.3. The project addresses issues in the Calne Community Area Plan, providing activities for young people and children and encouraging a sense of community cohesion, pride and well being.

8.3.4. This is widely recognised as a well organised and valuable project which has, for the last 13 years, served different groups of children and young people who live in the 2 most socially deprived areas of Calne and one of the 3 most deprived wards in Wiltshire (according to the indices of deprivation 2000)

8.3.5. This group is a registered charity, which has a fundraising programme that enables free and half price places to be offered to families on low incomes.

8.3.6. Parents suffering the effects of deprivation often suffer low self esteem. This project encourages and supports parents to become involved as committee members and volunteers which may develop confidence and experience in engaging with their own children, other adults and authorities.

8.3.7. This project provides inclusive and equal opportunities. Many local families on low incomes can not afford a family holiday or to use expensive leisure provisions and many other schemes organised for young people in the area focus upon older children. The project aims to involve children in a wide range of activities everyday that they may not otherwise have an opportunity to experience, including art, craft, sports and games. Up to 80 places per day will be provided this also includes extra support for children with disabilities so that they are not excluded from the activities which their friends and siblings are involved in.

8.3.8. This application is not towards running costs as funds to cover this have already been sourced. An award of a Community Area Grant will enable the group to run a wide range of facilitated arts workshops and physical activities and to provide new materials and equipment for the scheme.

8.3.9. If the Area Board makes a decision not to fund the project the scheme will still go ahead, but the quality/number of activities on offer to the children will be affected, resulting in reduced value to the children, their families and the community.

Ref	Applicant	Project proposal	Funding requested
8.4. <b>010</b>	Calne Partnership of Churches	Mobile drop in for young people in Calne town centre	£2,000

**8.4.1. It is recommended that the Calne Partnership of Churches is awarded a grant of £2,000 conditional upon the balance of funding being in place.**

8.4.2. Officers are of the opinion that the application meets grants criteria for 2010/11

8.4.3. The project addresses issues laid out in the Calne Community Area Plan through providing activities for young people.

8.4.4. The Calne Partnership of Churches is leading in the organisation of this project, but officers have received assurance that the focus of the activities and support offered to young people will not have a religious basis and will be open to all young people from the Community Area regardless of faith.

8.4.5. The project will bring the 'Open Blue Bus' to Calne town centre for 2 hours every Friday night during school term time. It will provide opportunities to play traditional board games, play stations and the Wii. More importantly it will provide young people with a safe place to meet have a hot chocolate and 'hang out' with friends. Through the CAYPIG (Community Area Young Peoples Issues Group), young people have told the Area Board that the lack of this kind of facility is an issue for them.

8.4.6. In addition the project engages volunteers and provides space for groups such as 'Reach Out' to offer support and advice to young people (in the case of Reach Out this relates to preventative work around substance misuse).

8.4.7. This will be a free facility for all young people from the Community Area and, therefore can be considered to provide equal and inclusive access.

8.4.8. The project has already secured some funding towards this project and has provisionally found other funders who, together will provide match funding for this scheme.

8.4.9. If the Area Board makes a decision not to fund this project it will have to be delayed while alternative sources of funding are sought.

<b>Appendices:</b>	<b>Appendix 1 2009/10 Calne Community Area Grants Summary</b> <b>Appendix 2 Grant application – Calne Community Day Centre</b> <b>Appendix 3 Grant application – Calne Community Church</b> <b>Appendix 4 Grant application – Summer Fun in Calne</b> <b>Appendix 5 Grant application - Calne Partnership of Churches</b>
--------------------	---

No unpublished documents have been relied upon in the preparation of this report.

<b>Report Author</b>	Jane Vaughan, Community Area Manager Tel: 01249 706447 E-mail <a href="mailto:jane.vaughan@wiltshire.gov.uk">jane.vaughan@wiltshire.gov.uk</a>
----------------------	--

# Calne Area Board

## Community Grants to February 16<sup>th</sup> 2010

Name of Applicant	Project	Committee Approval Date	Amount Committed	Running Balance
SPLASH	Provide positive holiday activities for young people during half term holidays in October 2009 and February 2010	25-Aug-09	£3,980	£19,299
Goatacre Cricket Club	Provide new and replacement tools and equipment	25-Aug-09	£855	£18,444
Calne Town Council	Shop window displays on vacant units	22-Sep-09	£1,000	£17,444
Calne Heritage Centre	Publish a book on World War 1 - Calne Community Area	20-Oct-09	£1,758	£15,686
Cherhill Village Institute	Refurbish Toilet Facilities & create Unisex Disabled Toilet	15-Dec-09	£3,400	£12,286
Calne Community Area Partnership	Community Clean-up Day of the Abberd Brook, Calne	15-Dec-09	£926	£11,360
HAGGIS (Hilmarton & Goatacre Group Improving Safety)	Provide 'White gate' road safety measures	16-Feb-10	£2,140	£11,9220
Calne CAYPIG (Community Area Young Peoples Issues Group)	Provide equipment for a Power-kiting/Land-boarding Club	16-Feb-10	£3,665	£5,555
Calne Community Area Partnership (Environment Theme Group)	Towards the development of Friends of Abberd Brook – series of community projects, activities and a bank of volunteers	16-Feb-10	£5,000	£555
	Calne Town Council project 22-Sep_09 withdrawn	16-Feb-10	+£1000	£1,555
Community Area Board Cycle Stand Project Working Group (request)	To utilising the remaining budget for the furtherance of the Cycle Stand Project – towards the installation of stands at Heddington Primary School.	16-Feb-10	£1,555	£0
	VAT accrued through the Cycle Stand Project reimbursed to the Board		+£232	£232



<b>Report to</b>	<b>All Area Boards</b>
<b>Date of Meeting</b>	<b>March - April</b>
<b>Title of Report</b>	<b>LPSA Funding Bid: Community Payback</b>

Community Payback enables offenders to repay their debt to society through the contribution of time and labour to help local communities tackle a wide range of issues from graffiti and chewing gum removal to litter picking, ground clearance and other environmental improvement projects. Offenders work in the community as part of a fully supervised team. In Wiltshire over 72,000 hours of community payback time are completed every year by offenders, this equates to £378,500 of free labour to local communities.

This scheme can be of major benefit to Area Boards - offering fast and effective responses to issues of concern to local people. A wide range of works can be undertaken including litter, gum and graffiti removal, footpath clearance and repair, river clearing, decorating and maintenance of community facilities. Ideas for projects will be sought from the public, councillors and parishes through the issues system. These will be prioritised by Area Boards and the Community Payback team will develop programmes of work in response.

An investment of £73,000 is now sought from the LPSA fund to extend the scheme in terms of the range of services offered and also the reach of the scheme into more rural parts of the County. This latter will be achieved through the provision of 3 utilities trailers allowing teams access to hot water, toilets and refreshments during the day - enabling teams to be more self sufficient and able to undertake work in isolated rural areas. Investment will be used to purchase of high pressure cleaners for removal of graffiti and gum and additional equipment. This investment will be of direct and immediate benefit to the Area Boards and the local communities they serve.

The objectives of the project are

- To increase resources directed at key street scene issues that affect community wellbeing such as vandalism, graffiti, gum and littering
- To involve the public, parishes and area boards more directly in the criminal justice system building public awareness and service responsiveness and linking the scheme with the Area Boards' Community Issues system
- To target resources at projects and priorities identified by local communities
- To extend the reach of Wiltshire Community Payback into rural communities

The scheme supports objectives in the Local Agreement for Wiltshire around building more resilient and safer communities, protecting the environment, improving the way in which organisations in Wiltshire work together and supporting elected members in their community leadership roles. There are additional benefits for offenders, particularly young offenders, including the development of work skills and experience which increases future employability and contributes to reducing re-offending.

***The support of the Area Board is now sought for this bid.***





## CALNE AREA BOARD

Date	Cabinet Member Attending	Location	Area Board Agenda Items (including officer contact details)	Other events (provisional)
29 June 2010	Cllr John Noeken – BMP, ICT, HR, Procurement and Customer Services	Calne Town Hall	<p><b>Community Items:</b></p> <p><b>Partner items:</b></p> <p><b>Corporate items:</b>                      JSNA Feedback                      LDF Consultation Results                      Parking Strategy Consultation                      Review of the Library Service  <b>Community Area Grants will be considered.</b></p>	
24 August 2010	Cllr Lionel Grundy – Children’s Services	Calne Town Hall	<p><b>Community Items:</b></p> <p><b>Partner items:</b></p> <p><b>Corporate items:</b></p> <p><b>Community Area Grants will be considered.</b></p>	
26 October 2010	Cllr Jane Scott - Leader	Calne Town Hall	<p><b>Community Items:</b></p> <p><b>Partner items:</b></p> <p><b>Corporate items:</b>                      Leisure Review                      Gypsy + Traveller Consultation                      Standards Committee  <b>Community Area Grants will be considered.</b></p>	

Community area manager: Jane Vaughan (jane.vaughan@wiltshire.gov.uk)  
 Democratic services officer: Alexa Smith (alexa.smith@wiltshire.gov.uk)  
 Service director: Deborah Farrow (deborah.farrow@wiltshire.gov.uk)

